

# Installation Manual

Direct Dye Sublimation Printer DCP360i

## Printer Driver



### Operating System

The software operates in the following environment.

Microsoft Windows XP

Microsoft Windows 2000 Professional

1st Edition, Apr. 2005

# Contents

---

<b>Installation .....</b>	<b>3</b>
Installation of Printer Driver .....	3
Installation of Printer Driver – Network Connection.....	8
<b>Uninstalling .....</b>	<b>10</b>
Deletion of Printer Driver .....	10
Updating of Printer Driver .....	11

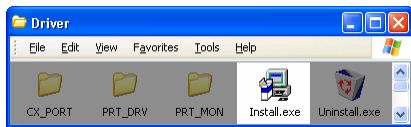
## Notes about this manual

- (1) This manual may not be reprinted in any way without permission.
- (2) The contents of this manual, as well as the specifications and design of this product, may change without notice.
- (3) The illustrations used in this manual may differ slightly from the actual product.
- (4) Microsoft, Windows is a registered trademark of Microsoft Corporation U.S.A. in United States of America and other countries. In this book, the names for Microsoft® Windows® XP operating system and Microsoft® Windows® 2000 operating system are written as WindowsXP and Windows2000 respectively.

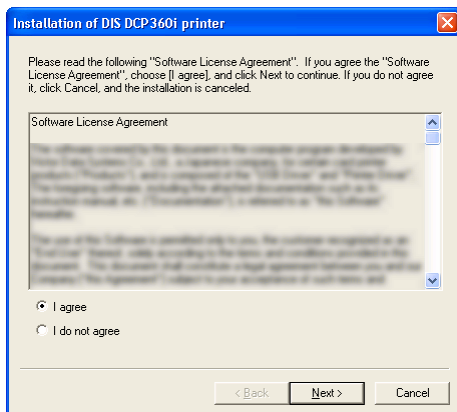
# Installation

## Installation of Printer Driver

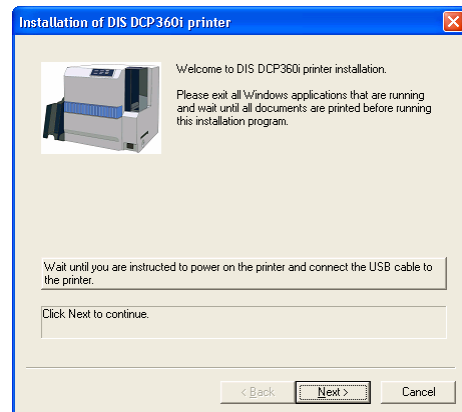
1. Wait until you are instructed to power on the printer and connect the USB cable to the printer.
2. Start Windows and insert the attached CD-ROM into the PC.
3. Double-click “Driver\install.exe” on the CD-ROM to launch the printer driver installer.



4. When the following screen appears, read the “Software License Agreement” in it.  
If you agree the “Software License Agreement”, choose “I agree”, and click “Next” to continue.  
If you do not agree it, click “Cancel”, and the installation is canceled.



5. When the following screen appears, confirm the contents in it. Click “Next” to continue.

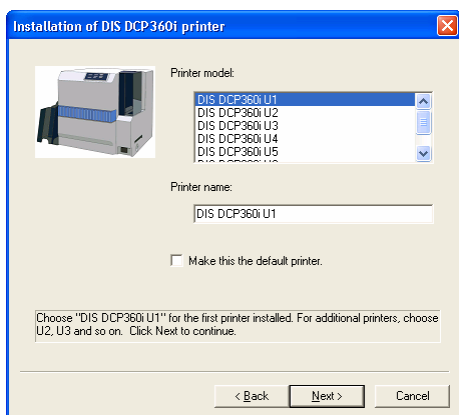


### Caution:

Please exit all Windows applications that are running and wait until all documents are printed before running this installation program.

# Installation (continued)

- 6.** When the following screen appears,
- (1) choose the “Printer model” with reference to the following table,
  - (2) enter “Printer name”,
  - (3) check “Make this the default printer.” if needed, and
  - (4) click “Next” to continue.

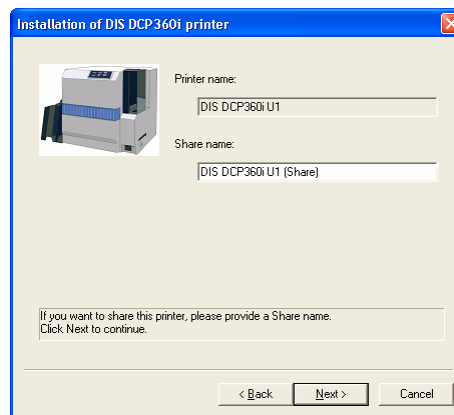


Printer hardware settings	Printer model of this screen	USB device driver
Unit No. No.1 (Default)	DIS DCP360i U1	DCP360i U1
Unit No. No.2	DIS DCP360i U2	DCP360i U2
Unit No. No.3	DIS DCP360i U3	DCP360i U3
Unit No. No.4	DIS DCP360i U4	DCP360i U4
Unit No. No.5	DIS DCP360i U5	DCP360i U5
Unit No. No.6	DIS DCP360i U6	DCP360i U6
Unit No. No.7	DIS DCP360i U7	DCP360i U7

**Caution:**

Choose the “Printer model” according with the “Printer hardware settings”. Otherwise, the installation may go wrong.

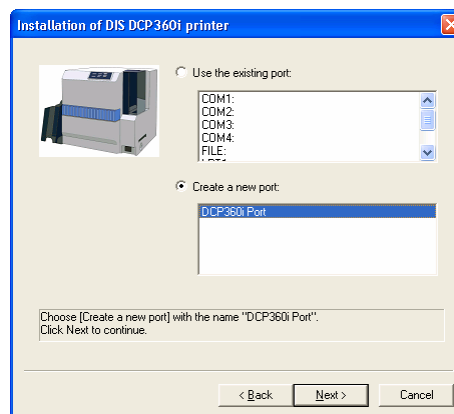
- 7.** When the following screen appears,
- (1) enter “Share name” if needed, and
  - (2) click “Next” to continue.



**Note:**

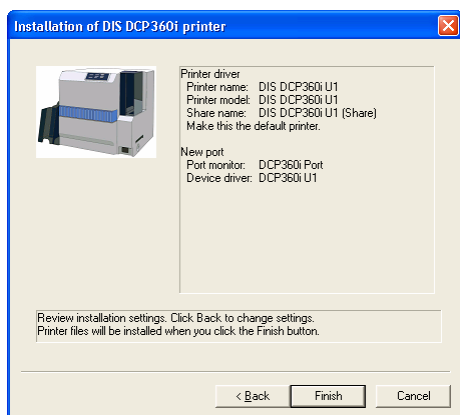
If there is no character in the “Share name”, the printer does not share. The share printer can set after the installation.

- 8.** When the following screen appears,
- (1) choose “Create a new port:”, and
  - (2) click “Next” to continue.



# Installation (continued)

- 9.** When the following screen appears, review installation settings. Printer files will be installed when you click the “Finish” button.

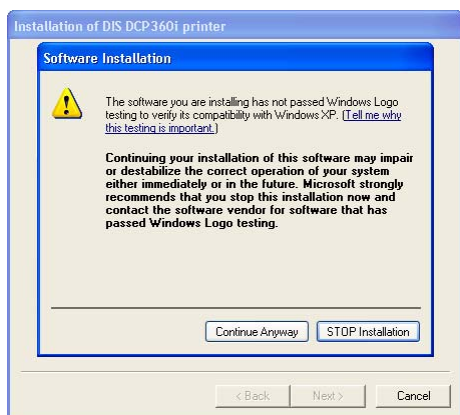


**Note:**

If you want to change settings, click “Back” to modify.

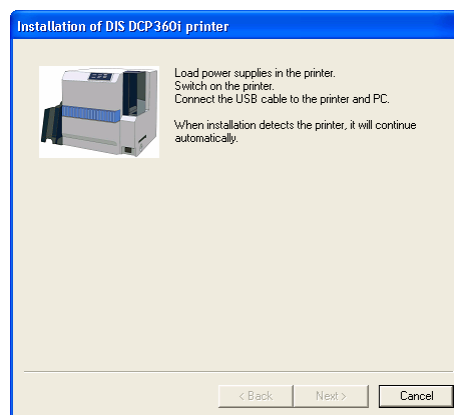
- 10.** When the following screen appears, click “Continue Anyways” to continue.

(Windows XP only)



- 11.** When the following screen appears, (1) load power supplies in the printer, (2) switch on the printer, and (3) connect the USB cable to the printer and PC.

When installation detects the printer, it will continue automatically.



- 12.** When the following screen appears, (1) choose “No, not this time”, and (2) click “Next” to continue.

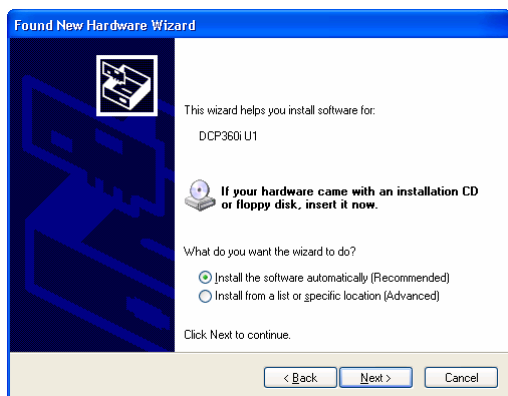
(Windows XP SP2 only)



# Installation (continued)

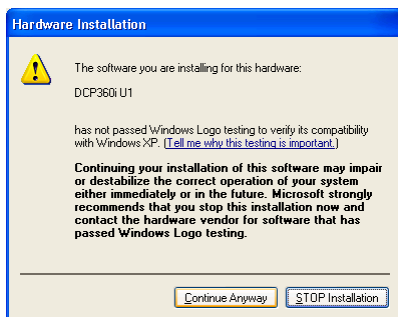
- 13.** When the following screen appears,
- (1) choose the “Install the software automatically (Recommended)”, and
  - (2) click “Next” to continue.

(Windows XP only)



- 14.** When the following screen appears, click “Continue Anyways” to continue.

(Windows XP only)



- 15.** When the following screen appears, click “Finish” to continue.

(Windows XP only)



- 16.** When the following screen appears, click “Continue Anyways” in the case of Windows XP.

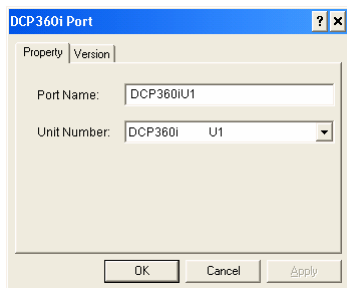


When the following screen appears, click “Yes” in the case of Windows 2000.



# Installation (continued)

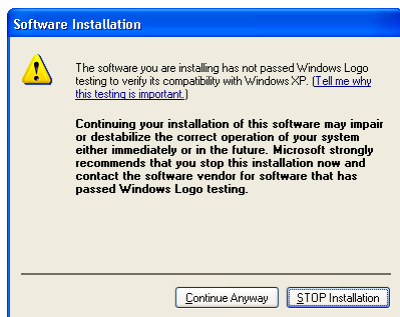
- 17.** When the following screen appears,
- (1) choose “Property” tab,
  - (2) enter “Port Name:”,
  - (3) choose the printer from “Unit Number:”, and
  - (4) click “OK” to continue.



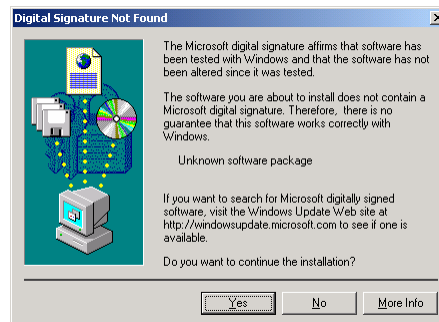
## Caution:

If the “No Device” is displayed in the “Unit Number:”, the connection of USB is incorrect. Continue until the finish of the installation. After that, delete and re-install the printer driver.

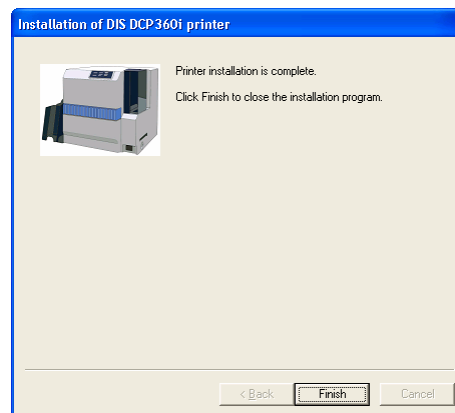
- 18.** When the following screen appears, click “Continue Anyways” in the case of **Windows XP**.



When the following screen appears, click “Yes” in the case of **Windows 2000**.



- 19.** When the following screen appears, click “Finish” to close the installation program.



- 20.** Confirm the added printer is displayed in the “Printers and Faxes” of “Control Panel”.



Installation of the printer driver has been completed now.

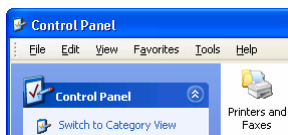
## Caution:

If you want to the deletion of the printer, you can do it after the reboot.

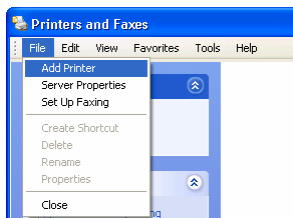
# Installation (continued)

## Installation of Printer Driver - Network Connection

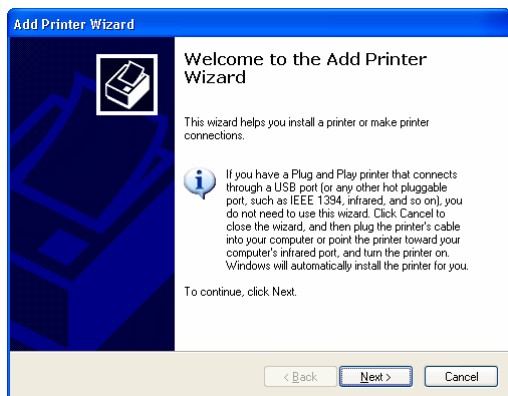
1. Ensure that access to the PC connected to the printer is possible. Also ensure that the printer can be shared.
2. Open "Control Panel" from "My Computer" and double-click on "Printers and Faxes".



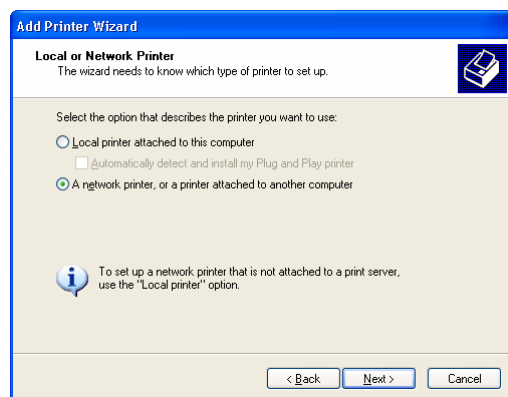
3. When the following screen appears, click "Add printer" in the "File" menu.



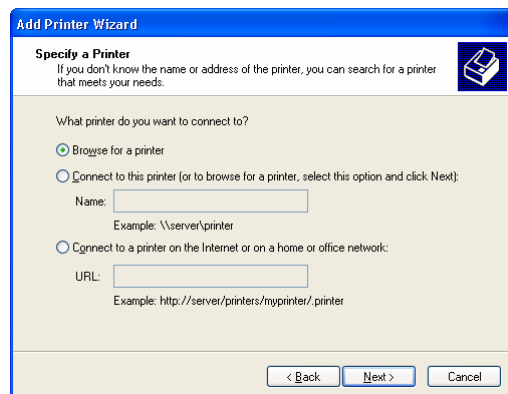
4. When the following screen appears, click "Next" to continue.



5. When the following screen appears, (1) choose "A network printer, or a printer attached to another computer", and (2) click "Next" to continue.



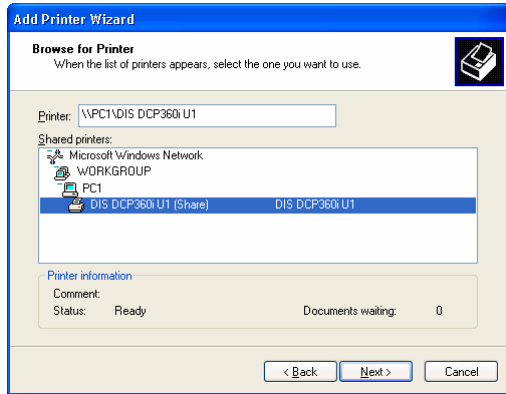
6. When the following screen appears, (1) choose "Browse for a printer", and (2) click "Next" to continue.



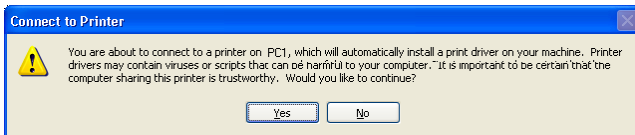


# Updating of Driver [Windows2000] (continued)

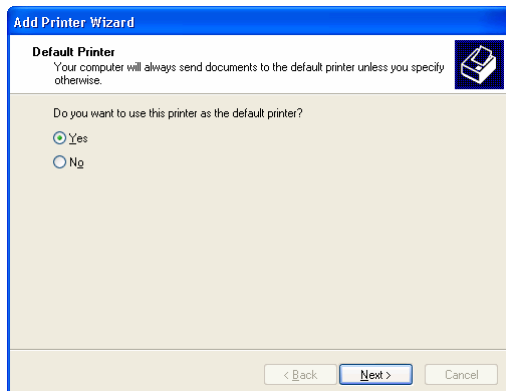
- 7.** When the following screen appears,  
(1) choose a printer from “Shared printers:”, and  
(2) click “Next” to continue.



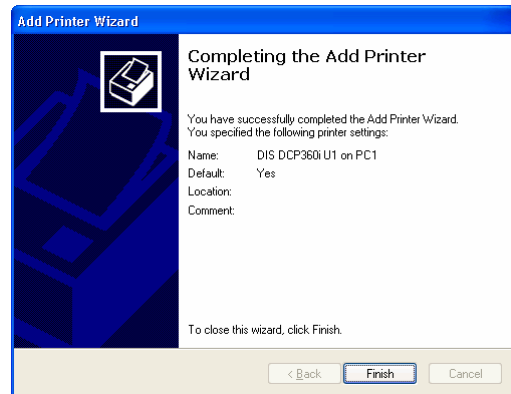
- 8.** When the following screen appears, click  
“Yes” to continue.



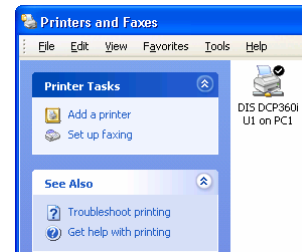
- 9.** When the following screen appears,  
(1) choose “Yes” if needed, and  
(2) click “Next” to continue.



- 10.** When the following screen appears, click  
“Finish” to continue.



- 11.** When the following screen appears,  
confirm the shared printer is displayed.

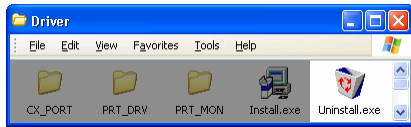


Network connection (printer sharing) setting has been completed now.

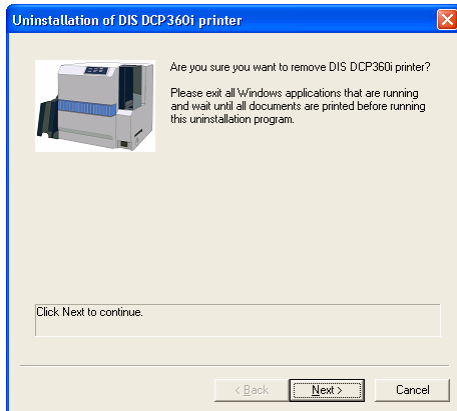
# Uninstalling

## Deletion of Printer Driver

1. Please connect the printer to the USB, and turn on the power for the printer.
2. Start Windows and insert the attached CD-ROM into the PC.
3. Double-click “Driver\uninstall.exe” on the CD-ROM to launch the printer driver uninstaller.



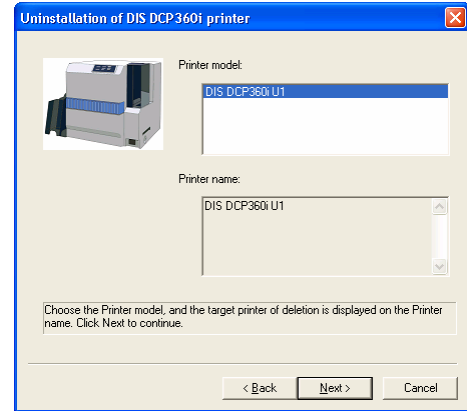
4. When the following screen appears, click “Next” to continue.



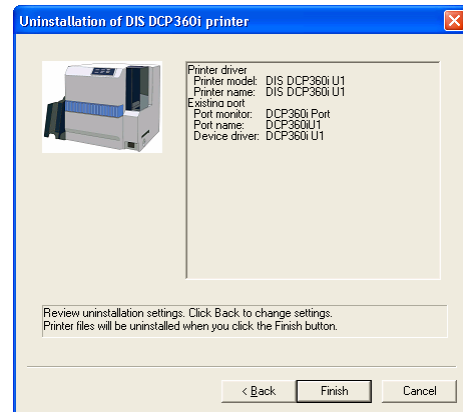
### Caution:

Please exit all Windows applications that are running and wait until all documents are printed before running this uninstallation program.

5. When the following screen appears,  
(1) choose “Printer model”, and  
(2) click “Next” to continue.



6. When the following screen appears, review uninstallation settings. Printer files will be uninstalled when you click the “Finish” button.



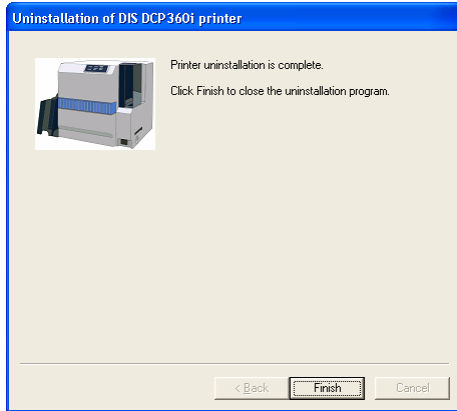
### Note:

If you want to change settings, click “Back” to modify.

# Uninstalling (continued)

---

7. When the following screen appears, click “Finish” to close the installation program.



Deletion of the printer driver has been completed now.

## Caution:

If you want to the installation of the printer again, you can do it after the reboot.

## Updating of Printer Driver

The procedure of updating of the printer driver is performance of the deletion and installation of the printer driver.

Please refer to “Installation of Printer Driver” and “Deletion of Printer Driver” for the necessary procedures.

