

Instruction Manual

Direct Dye Sublimation Printer DCP360i

Printer Driver



Operating System

The software operates in the following environment.

Microsoft Windows XP

Microsoft Windows 2000 Professional

1st Edition, Apr. 2005

Contents

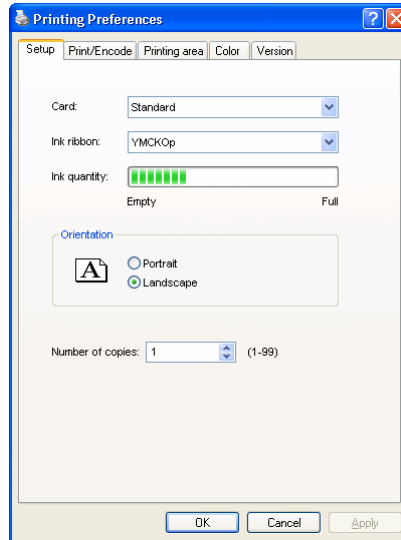
| | |
|--|-----------|
| Printer Driver Settings..... | 3 |
| [Setup] Tab Sheet | 3 |
| [Print/Encode] Tab Sheet..... | 4 |
| [Printing area] Tab Sheet | 6 |
| [Color] Tab Sheet | 7 |
| [Version] Tab Sheet..... | 8 |
| | |
| Port Monitor Settings | 9 |
| [Property] Tab Sheet..... | 9 |
| [Version] Tab Sheet..... | 9 |
| Error Code List..... | 10 |
| | |
| FAQ (Frequently asked questions)..... | 11 |

Notes about this manual

- (1) This manual may not be reprinted in any way without permission.
- (2) The contents of this manual, as well as the specifications and design of this product, may change without notice.
- (3) The illustrations used in this manual may differ slightly from the actual product.
- (4) Microsoft, Windows is a registered trademark of Microsoft Corporation U.S.A. in United States of America and other countries. In this book, the names for Microsoft® Windows® XP operating system and Microsoft® Windows® 2000 operating system are written as WindowsXP and Windows2000 respectively.

Printer Driver Settings

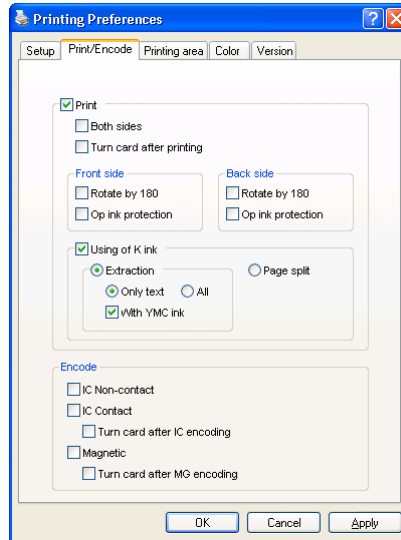
[Setup] Tab Sheet



| Item | Description |
|------------------|---|
| Card | Specify the card to use. |
| Ink ribbon | Specify the ink ribbon to use. The ink ribbon set inside the printer will be automatically selected if communication with the printer is possible. |
| Ink quantity | Indicates the remaining quantity of the ink ribbon. This is not displayed when communication with the printer is not established. |
| Orientation | Specify the printing orientation. |
| Portrait | : Vertical (Print with the short edge of the card at the top.) |
| Landscape | : Horizontal (Print with the long edge of the card at the top.) |
| Number of copies | Enter the number of copies to print. (Input a numerical value between 1 to 99.) |

Printer Driver Settings (continued)

[Print/Encode] Tab Sheet



| Item | Description |
|--|---|
| Print | For executing printing. |
| Both sides | Print on both sides of the card. |
| Turn card after printing | Reverse the card upon printing. |
| Rotate by 180 [Front/Back side] | Print the card upside down. |
| Op ink protection [Front/Back side] | Print OP ink to protect printing surface. Set using the [Printing area] tab if there are some areas for which OP ink is not to be printed. (Refer to page 6) |
| Using of K ink | Use K ink. |
| Extraction | : Specify the black color element for printing with K ink. |
| Only text | : Use K ink to print black text only. |
| All | : Use K ink to print all black color elements. |
| With YMC ink | : Use also YMC ink to print specified black color elements. |
| Page split | : Print first page (odd pages) using YMC ink and second page (even pages) using K ink. |

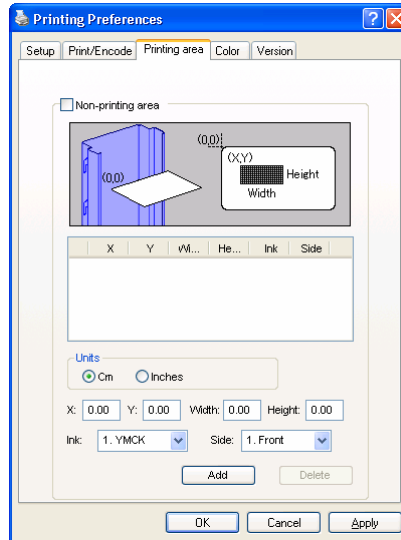
Printer Driver Settings (continued)

(Continued)

| Item | Description |
|-----------------------|--|
| Encode | Encode Settings |
| IC Non-contact | : Encode non-contact IC. |
| IC Contact | : Encode contact IC. |
| Turn card after IC... | : Reverse card upon IC encoding. |
| Magnetic | : Perform magnetic encoding. |
| Turn card after MG... | : Reverse card upon IC magnetic encoding. |
| | Only the unit installed within the printer is displayed as enabled when communication with the printer is established. |

Printer Driver Settings (continued)

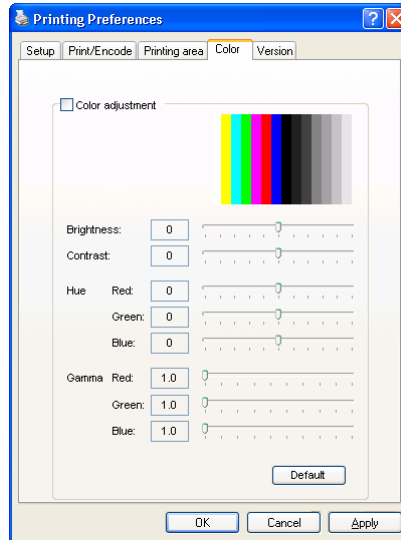
[Printing area] Tab Sheet



| Item | Description |
|--------------------|---|
| Non-printing area | For disabling printing within a registered rectangular region. This rectangular region is named the “non-printing area”. Details on the registered “non-printing area” will be displayed on a list. |
| Unit cm inch | Specify the unit. : centimeters : inches |
| X | Enter the X-coordinate for the starting point of the “non-printing area”. |
| Y | Enter the Y-coordinate for the starting point of the “non-printing area”. |
| Width | Enter the width of the “non-printing area”. |
| Height | Enter the height of the “non-printing area”. |
| Ink | Specify the ink inside the ink ribbon for which “non-printing area” is to be enabled. |
| Side | Specify the side of the card for which “non-printing area” is to be enabled. |
| Add | Register input data as a “non-printing area”. Up to 8 areas can be registered. |
| Delete | Delete a “non-printing area” from the list. |

Printer Driver Settings (continued)

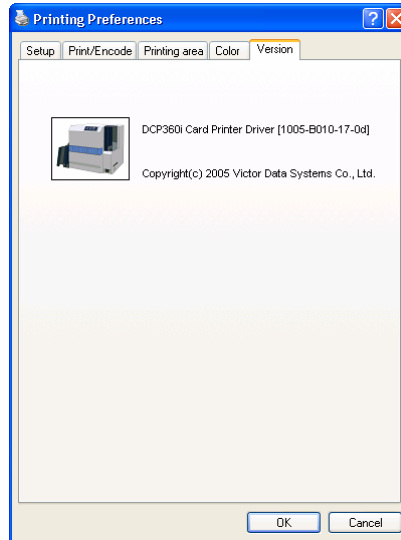
[Color] Tab Sheet



| Item | Description |
|---------------------------|---|
| Color adjustment | For adjusting the colors. |
| Brightness | Set the color brightness. |
| Contrast | Set the color contrast. |
| Hue [Red/Green/Blue] | Set hue values (Red/Green/Blue). |
| Gamma [Red/Green/Blue] | Set gamma correction values (Red/Green/Blue). |
| Default | Restore to default settings. |

Printer Driver Settings (continued)

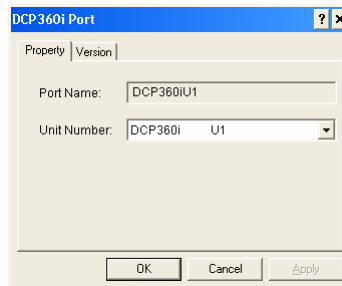
[Version] Tab Sheet



| Item | Description |
|------------------|--|
| DCP360i Card ... | Displays the version information. DCP360i Card Printer Driver [nnnn-xxxx-yy-zz] nnnn : Version of printer driver xxxx : Version of firmware yy : Version of Config zz : Version of Table Version information for the firmware, Config and Table will appear as '0' when communication with the printer is not established. |
| Copyright(c) ... | Displays the copyright information. |

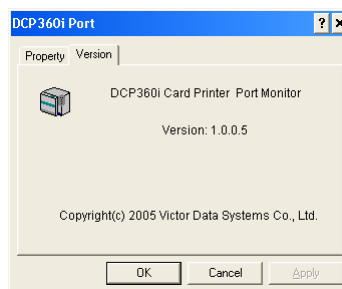
Port Monitor Settings

[Property] Tab Sheet



| Item | Description | | | | | | |
|--------------|---|---------|-------------|-----------|-----------------------------|--------------|---|
| Port Name | Enter the port name. (Up to 24 single-byte characters) | | | | | | |
| Unit Number | Specify the unit number of the printer in use. Settings are incorrect when the following messages are displayed. <table border="1" data-bbox="513 940 1364 1142"> <thead> <tr> <th>Message</th> <th>Description</th> </tr> </thead> <tbody> <tr> <td>No Device</td> <td>Unable to find the printer.</td> </tr> <tr> <td>No Selection</td> <td>Unit number of the printer connected is different from the previous connection.</td> </tr> </tbody> </table> | Message | Description | No Device | Unable to find the printer. | No Selection | Unit number of the printer connected is different from the previous connection. |
| Message | Description | | | | | | |
| No Device | Unable to find the printer. | | | | | | |
| No Selection | Unit number of the printer connected is different from the previous connection. | | | | | | |

[Version] Tab Sheet



| Item | Description |
|------------------|---|
| DCP360i Card ... | Displays the version and copyright information. |

Port Monitor Settings (continued)

Error Code List

| No. | Error Code | Description |
|-----|---------------------------------------|--|
| 1 | 0x01020401 | The printer is initialization in progress. |
| 2 | 0x01020480 | Printer door is open. |
| 3 | 0x01020481 | Cleaning roller is not installed. |
| 4 | 0x01023A00 | No card. |
| 5 | 0x0102**** | The printer is warming up. |
| 6 | 0x01033600 | Ink ribbon is not installed or cannot be recognized. |
| 7 | 0x01033B81 | Card jam occurred during card feed. |
| 8 | 0x01033B** | Card jam occurred during card feed or card transfer. |
| 9 | 0x0103**** | Media error detected. |
| 10 | 0x01043681 | Ink ribbon is not installed or faulty. |
| 11 | 0x0104**** | Hardware error detected. |
| 12 | 0x01052080 | IC encoder is not installed. |
| 13 | 0x01052081 | Magnetic encoder is not installed. |
| 14 | 0x01420081 | Remaining ink ribbon level is 0. |
| 15 | 0x01420082 | Remaining laminating film level is 0. |
| 16 | 0x02***** | Unable to find the printer. |
| 17 | 0x0105**** 0x010B**** 0x09***** | Command error detected. |
| 18 | 0x01030C00 0x10000103 | Writing of magnetic encoding data failed. |
| 19 | 0x10000201 | Unable to find contact IC encoding program. |
| 20 | 0x10000202 | Unable to establish communication with contact IC encoder. |
| 21 | 0x10000203 | Writing of contact IC encoding data failed. |
| 22 | 0x10000301 | Unable to find non-contact IC encoding program. |
| 23 | 0x10000302 | Unable to establish communication with non-contact IC encoder. |
| 24 | 0x10000303 | Writing of non-contact IC encoding data failed. |

FAQ

Q Ink ribbon settings are automatically restored to their default settings upon changing.

A Ink ribbon set inside the printer is automatically selected.

[Important] When the printer is connected locally, there is no need to perform ink ribbon setting.

Q Remaining ink ribbon level is not displayed.

A The printer may not be properly connected. Check the connection and power supply of the printer.

[Note] When the printer is connected to the network, information on remaining ink ribbon level cannot be acquired from a client PC.

Q Cards are discharged without being printed.

A The [Print] check box in the [Print/Encode] tab is not selected. Select the [Print] check box. (Refer to page 4.)

Q How do I print black color with K ink?

A Select the [Using of K ink] in the [Print/Encode] tab. (Refer to page 4.)

Q How do I perform magnetic/IC encoding?

A A special application is required. For more details, please inquire to the dealer.

Q How do I print Op ink on partial areas instead of the entire card?

A Set the area for which Op ink is not to be printed in the [Printing area] tab. (Refer to page 6.)

Q Values for firmware, config and table versions are displayed as '0'.

A The printer may not be properly connected. Check the connection and power supply of the printer.

[Note] Version information cannot be acquired from a client PC when the printer is connected to the network.

