

Read this first!

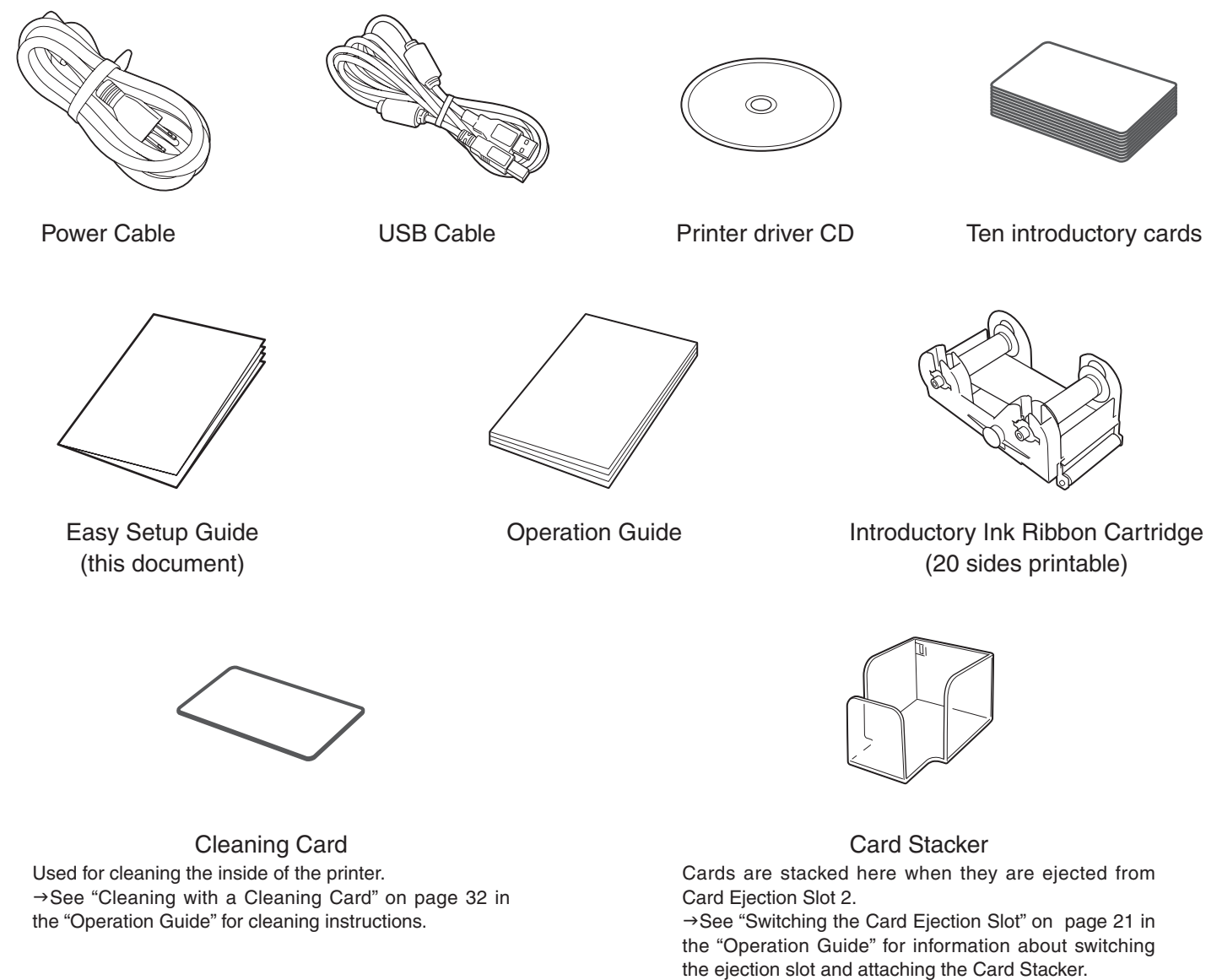
This guide explains how to unpack and set up the printer, including how to install the Ink Ribbon Cartridge, load cards, connect the Power Cable, install the printer driver and connect to a computer. Be sure to read this guide before operating the printer.

## 1. Unpacking the Printer

- ① **Unpack the accessories**  
Take everything out of the box except for the printer.
- ② **Take out the inner case**  
Grasp the inner case by the handles and lift it out of the box.
- ③ **Open the inner case**  
Pull the sides outward to open the inner case and remove the printer.

## 2. Checking the items in the package

Make sure that everything listed below is in the package. If everything is not in the package when you open it, contact your reseller.



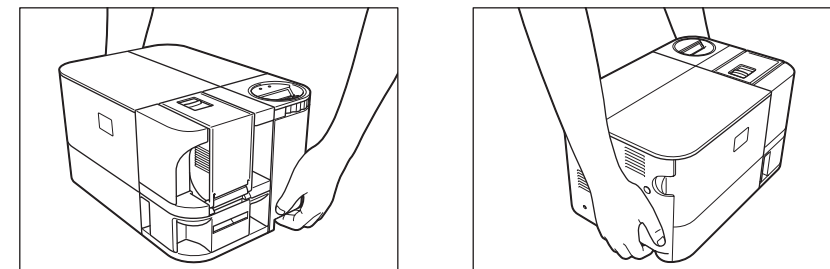
## 3. Setting up the printer

### CAUTION

Do not install the printer in places like those described below. Doing so may cause a fire, electric shock, injury, or malfunction.

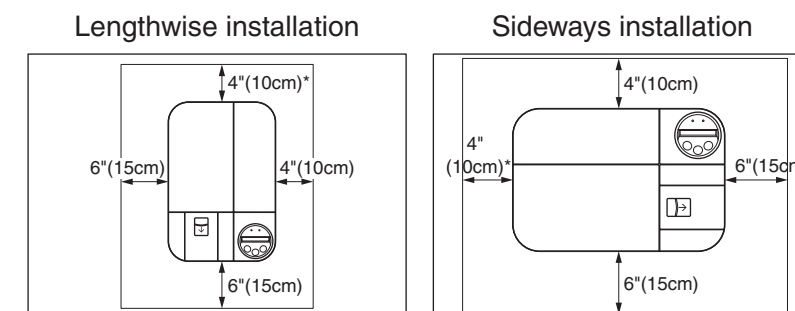
- Extremely dusty or humid places
- Near a stove, heater or other device that produces heat
- Near volatile substances, curtains or other items that are flammable
- On a wobbly table, on a slant or other unstable location
- In direct sunlight
- In a location subject to extreme vibration
- In a location subject to rapid changes in temperature

Carry the printer as shown in the diagrams below. Holding the printer in any other way may cause injury or damage to the printer.



### ① Necessary installation space

The printer needs the installation space shown in the diagram below for smooth operation. Maintain at least 4" (10 cm) of open space above the printer.



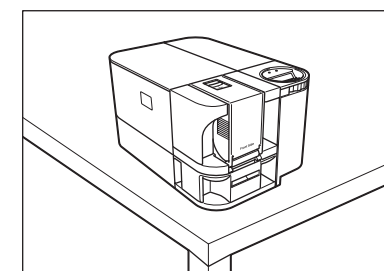
The diagram above shows the value of minimum air flow space from any walls when the Card Stacker is not attached. If you attach the Card Stacker, the \* value increases to 6" (15 cm).

### Point

- The factory default is for both correctly printed cards and cards with errors to be output from Card Ejection Slot 1. You can easily sort cards with errors by attaching a Card Stacker and setting cards with errors to be output to Card Ejection Slot 2.  
→ See "Switching the Card Ejection Slot" on page 21 in the "Operation Guide" for information about switching the ejection slot and attaching the Card Stacker.
- You can install the printer either lengthwise or sideways and rotate the dial under the operation panel so it faces the direction of the installation.

### ② Printer position

Make sure that the Power Switch is turned off ("O" is pressed).



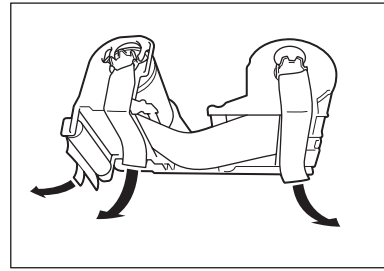
Instructions are continued on the back.

\* This guide is printed on recycled paper.

## 4. Installing the Ink Ribbon Cartridge

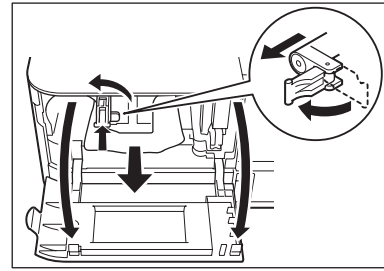
### ① Remove the film and tape from the Ink Ribbon Cartridge

Take the Ink Ribbon Cartridge out of the box and remove the Cleaning Tape Protector and the tape holding the ink ribbon.

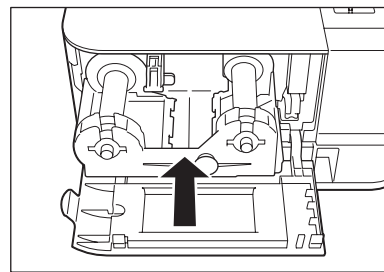


### ② Open the Front Cover, lift the lever and remove the sheet

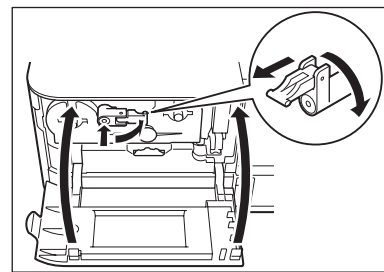
Pull the tip of the lever out and turn it to the left. After turning the lever, push it in to fix it in place. Do not pull on the tape when removing the sheet.



### ③ Installing the Ink Ribbon Cartridge



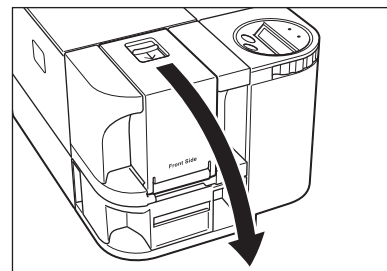
### ④ Lower the lever and close the Front Cover. Repeat step ② in reverse to lower the lever.



## 5. Loading cards

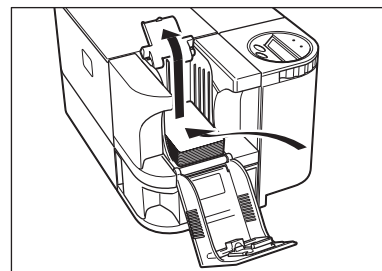
### ① Open the cover

While pulling the lock lever, open the cover towards you.



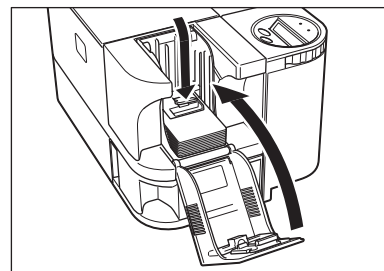
### ② Loading cards

Lift up the weight and load the cards with the printable surface up.



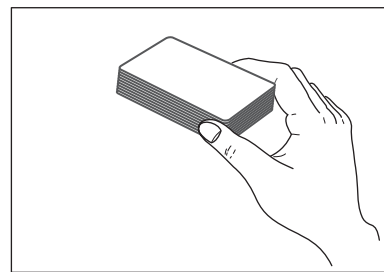
### ③ Close the cover

Place the weight on the cards and close the cover.



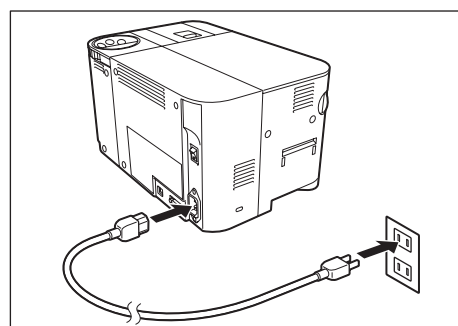
#### Important

When loading the cards, be sure to pinch the edge of them. Never touch the printing side.



## 6. Connecting the Power Cable

Do not turn on the power yet.

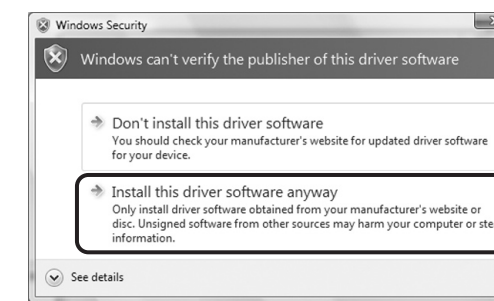


## 7. Installing the printer driver

The printer driver can be used in the Windows 2000/XP/Vista (32bit). Log into a user account with the administrator privilege.

- Start up your computer and insert the printer driver CD provided
- When the [An unidentified program wants access to your computer] screen opens, click [Allow] (only when using Windows Vista)  
If you are using Windows Vista, a dialog opens to check the publisher of the program.
- When the license agreement appears, read it and then click [Agree] and then [Next]
- When the start installation dialog appears, click [Next]
- When the confirm installation information dialog appears, click [Start]  
Installation starts.
- When the following warning appears, click [Install this driver software anyway] or [Continue Anyway]

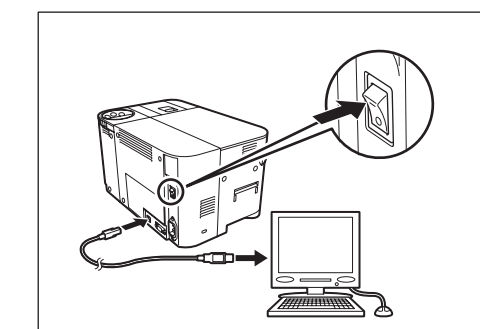
For Windows Vista



For Windows XP



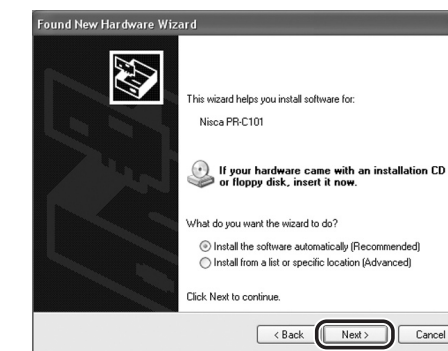
- When the printer connection screen appears, turn on the printer's power and connect the USB cable



- When the following screen appears, click [Next], [Continue Anyway] and then [Finish] (Only when using Windows XP)

If you are using Windows XP, a dialog opens to confirm the publisher of the program.

If "Welcome to the Found New Hardware Wizard" screen appears before the following screen, select [Yes, now and every time I connect a device] and then [Next].



- When the complete installation dialog appears, click [Finish]

**You are now ready to print cards.**

\* Windows is registered trademarks or trademarks of Microsoft Corporation in the U.S. and / or other countries.